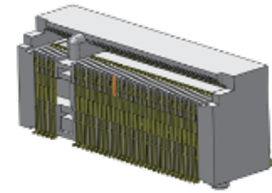
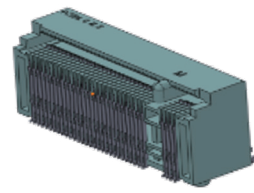


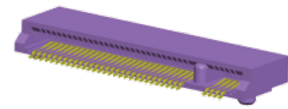
## PCIe M.2 Connector



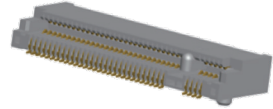
M.2, Gen3, 8.5mm



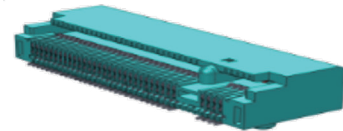
M.2, Gen4, 8.5mm



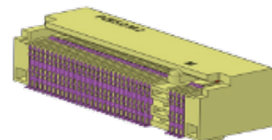
M.2, Gen5, 2.3mm MAX



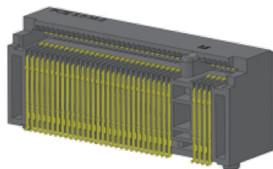
M.2, Gen5, 3.2mm MAX



M.2, Gen5, 4.2mm MAX



M.2, Gen5, 6.7mm



M.2, Gen5, 8.5mm

### Features

- 75pin, 0.5mm pitch
- LLCr initial 55mΩ max. and delta no greater than 20mΩ
- Current rating 0.5 or 1A per pin
- Insertion force 20 N (2.04 kgf) max
- Durability 60 cycles
- Operating temperature -40°C ~ 80°C
- Support 8GT/S~32GT/S

## Common

### PCIe5.0 M.2 Connector

#### Features

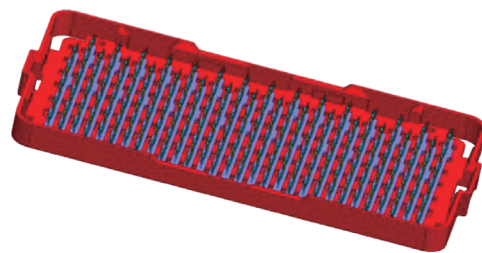
- The M.2 PCIe5.0 interface enables high-speed transmission of large files, significantly enhancing data read and write efficiency. A typical M.2 PCIe SSD boasts read and write speeds several times faster than a SATA SSD, thereby accelerating computer performance
- The M.2 PCIe interface is more compact than the SATA interface, eliminating the need for data and power cables which reduces wire clutter and saves internal space
- The M.2 PCIe interface not only supports the SATA protocol, but also supports higher NVMe and AHCI protocols, providing faster speed

### 112G 600Pin BGA BTB (Mezzanine)

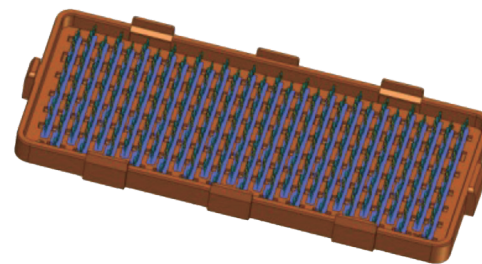
#### Features

- Support 112G PAM-4
- 90 ohms impedance nominal
- Pitch: 4.0mm between differential pairs, 1.6mm between rows
- High-density connector pin field includes 145 differential pairs
- Stack heights: 5.0mm
- Contact beam structure of a mated combination

## 112G 600Pin Mezzanine



Mezzanine 112G REC Side



Mezzanine 112G Plug Side

### Features

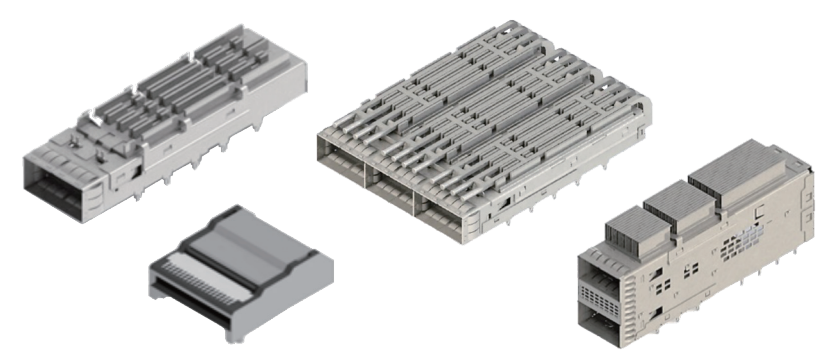
- Support 56 Gbps NRZ (112 Gbps PAM-4)
- Pitch: 4.0mm between differential pairs, 1.5mm between rows
- Mating Height: 5.0mm
- Pin Count: 600
- Voltage Rating (max.): 30 VDC
- Current (max. per contact): 1.0A
- Operating temperature: -40°C~105°C
- Impedance: 90 ohms



## High Speed Connector Product & Specifications

High Speed IO SFP Product

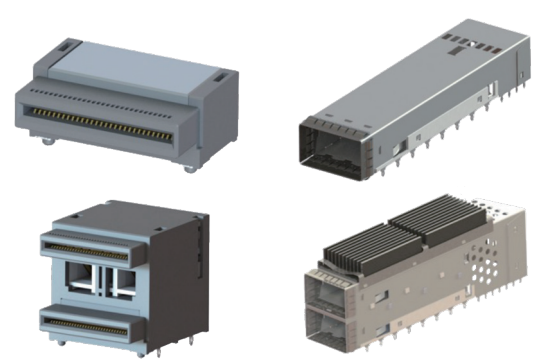
QSFP-DD Connector & Cage



Features

- QSFP-DD 800 MSA Compliant
- Support 56 Gbps-NRZ & 112 Gbps-PAM4 signals
- 1x1~1x4 and 2x1 Configurations available
- Customized Heat Sink (~20W) and Light Pipe available
- Operating temperature: -40°C~85°C

OSFP Connector & Cage



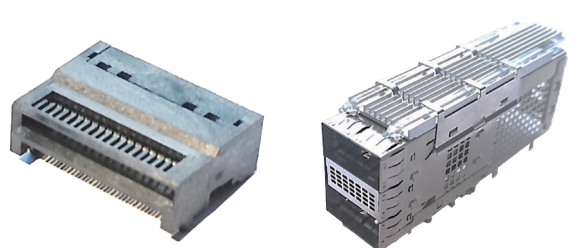
Features

- OSFP MSA Compliant
- Supports up to 112 Gbps-PAM4 signals
- 2x1 Configuration support up to 53.125 GHz bandwidth (802.3dj 200G signaling)
- 1x1 and 2x1 Configurations available
- Operating temperature: -40°C~85°C

Features

- QSFP112 0.6mm Pitch MSA Compliant
- Supports up to 112 Gbps PAM4 signals
- 1x1 and 2x1 Configurations available
- Customized Heat Sink (~20W) and Light Pipe available
- Operating temperature: -40°C~85°C

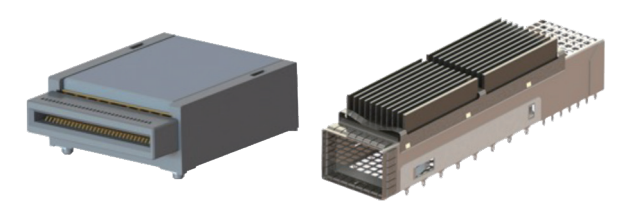
QSFP112 Connector & Cage



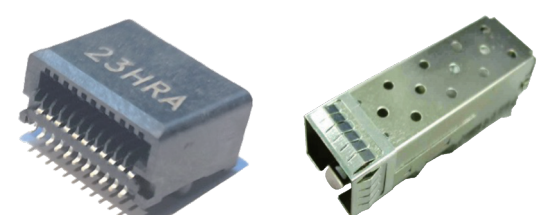
Features

- OSFP-XD MSA Compliant
- Supports up to 112 Gbps PAM4 signals
- 16 channels support 1.6T total bandwidth
- 1x1 Configuration in development (2024 Q3)
- Operating temperature: -40°C~85°C

OSFP-XD



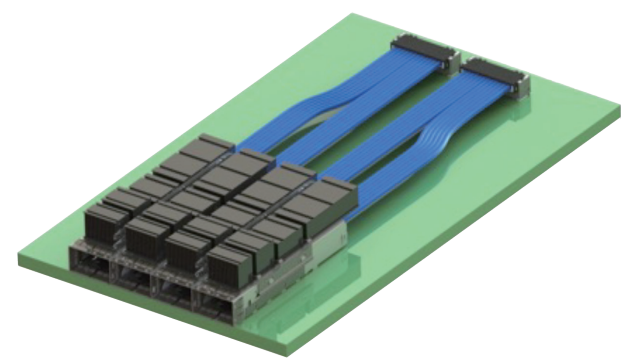
DSFP Connector & Cage



Features

- DSFP MSA Compliant
- Supports up to 56 Gbps PAM4 signals
- 1x1, 1x2, 1x4, 1x8 Configurations available
- Customerized HeatSink and Light Pipe available
- Operating temperature: -40°C~85°C

Fast Pass I/O (FPIO)  
High Speed Cabled Type IO



Features

FEATURES

- 32AWG drainless raw cable, 85 and 95 ohms impedance
- Robust latching for secure mating

SUPPORTED STANDARDS

- PCIe5
- PCIe6
- 56 Gbps-PAM4
- 112 Gbps-PAM4

APPLICATIONS

- High performance computing (HPC)
- High performance servers
- Data centers and enterprise networks
- Proprietary high-speed interconnect


Features

- SFP-DD MSA Compliant
- Supports up to 28 Gbps NRZ / 56 Gbps PAM4 signals
- 1x1 Configuration available
- Operating temperature: -40°C~85°C

SFP-DD Connector & Cage



Foxconn Interconnect Technology Limited

 [www.fit-foxconn.com](http://www.fit-foxconn.com)

 [info@fit.com.tw](mailto:info@fit.com.tw)

