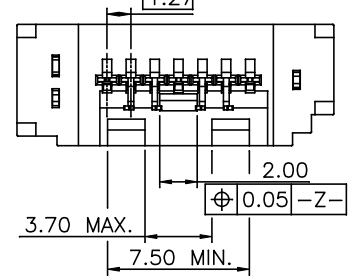
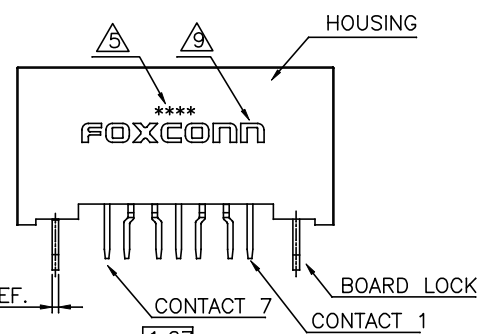
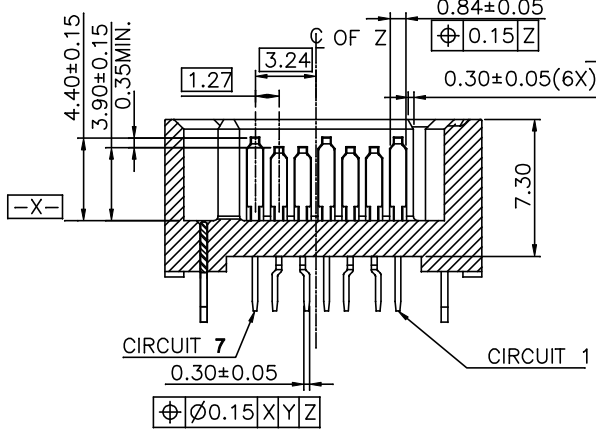
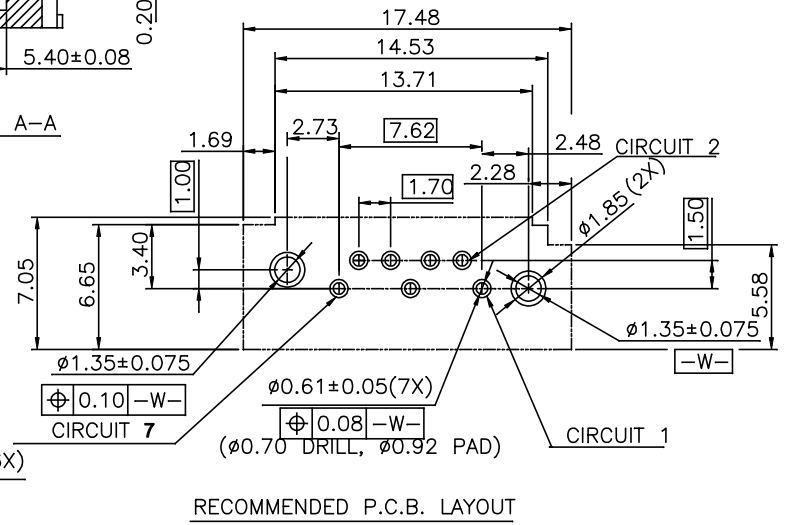
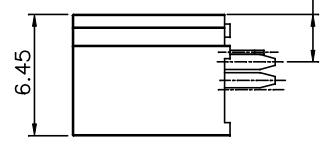
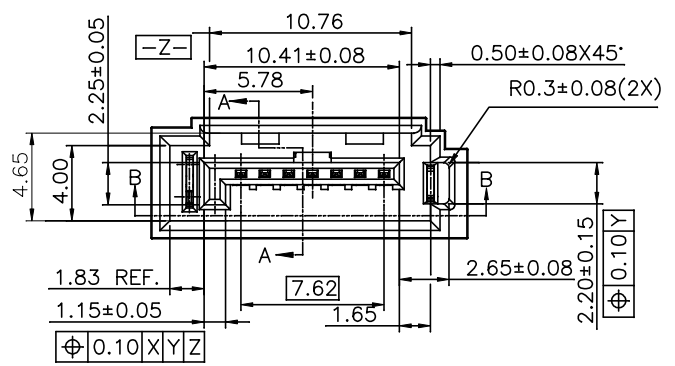
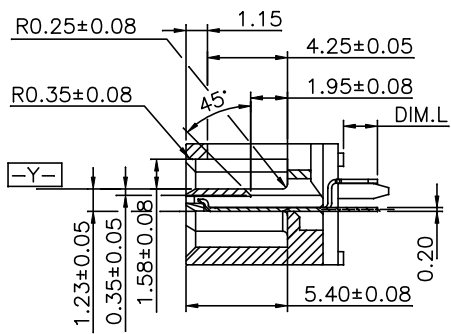
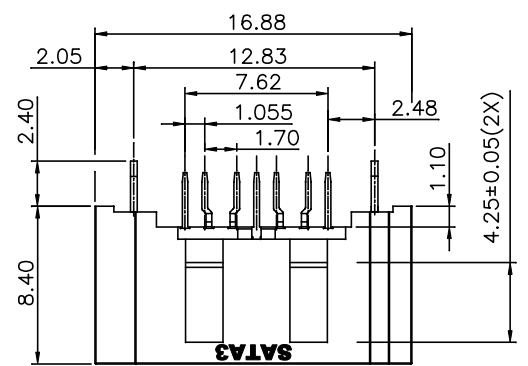


REV.	ECN. NO.	APPD.
X1	BS-18-032398	Shih-Wei Hsiao



x.±	x.±1'	UNITS	mm
.x±0.25	.x'±	MAT'L	
.xx±0.20	.xx'±		
.xxx±0.15	.xxx'±	FINISH	
THESE DRAWINGS AND SPECIFICATIONS ARE THE PROPERTY OF FOXCONN INTERCONNECT TECHNOLOGY LIMITED, AND SHALL NOT BE REPRODUCED, COPIED OR USED IN ANY MANNER WITHOUT THE PRIOR WRITTEN CONSENT OF FOXCONN INTERCONNECT TECHNOLOGY LIMITED.			
		Q'TY	

NAME(INTENDED USE)
SERIAL ATA

PART NO.(INTENDED USE)
LE18 SERIAL

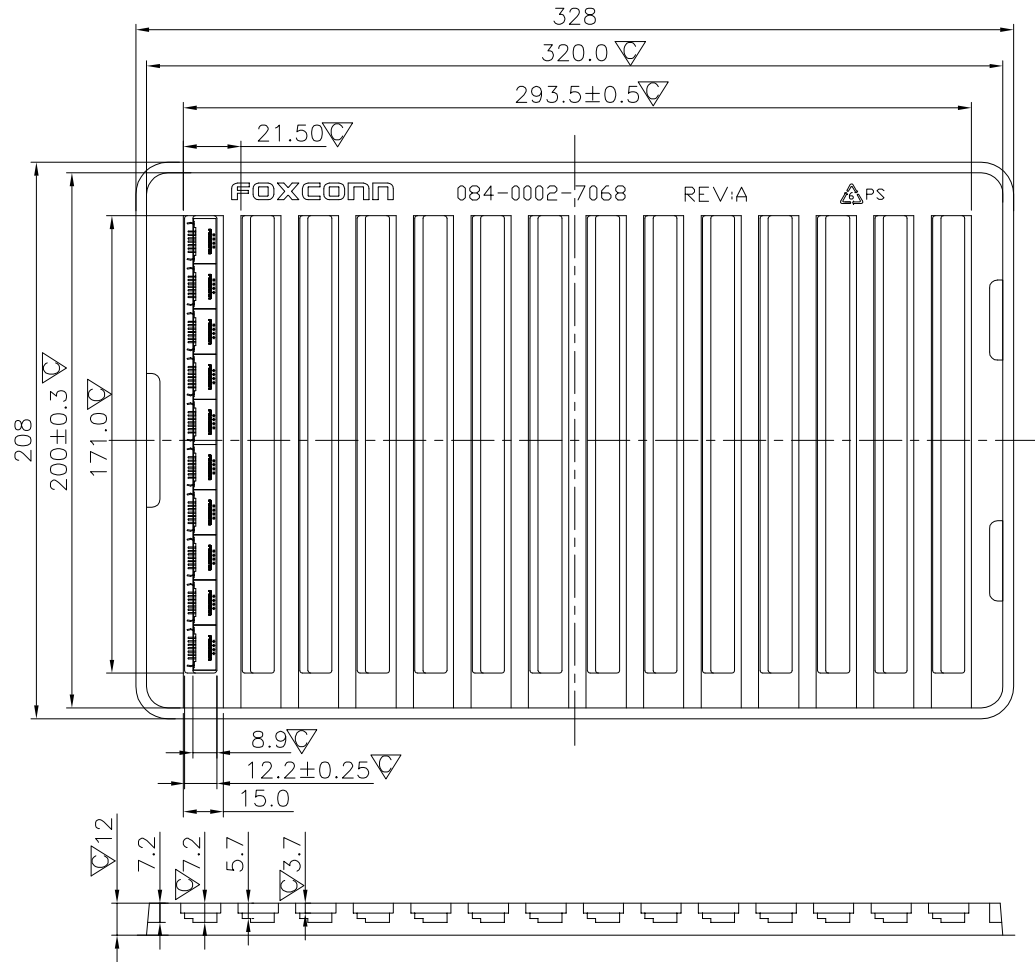
APPD: Shih-Wei Hsiao

CHKD: Yen-Chih.Chang

DRAW: K L Chang 8/17/18

P/N	LE1807*-A54D-**		
FOXCONN INTERCONNECT TECHNOLOGY LIMITED.			
CLASS: <input type="checkbox"/> CONFIDENTIAL <input type="checkbox"/> SECRET <input checked="" type="checkbox"/> GENERAL			
TITLE: CUSTOMER DRAWING			
DWG NO.: 303-0000-3435			
	SCALE	SHEET	REV.
	3:1	1/1	X1

REV.	ECN.	No.	APPD.



084-0002-7068
PART No.

X. ± 0.5	° X. ± 5°	UNITS	mm	NAME(INTENDED USE)	FOXCONN HON HAI PRECISION IND. CO.,LTD. TAIPEI, TAIWAN, R.O.C.
.X ± 0.3	° .X ±	MAT'L		SERIAL ATA	
.XX ± 0.25	.XX° ±	FINISH		PART No.(INTENDED USE)	TITLE:
.XXX ±	.XXX° ±	Q'TY		LD18 SERIES	PACKING TRAY DRAWING
THESE DRAWINGS AND SPECIFICATIONS ARE THE PROPERTY OF HON HAI PRECISION IND. CO., LTD. AND SHALL NOT BE REPRODUCED, COPIED OR USED IN ANY MANNER WITHOUT THE PRIOR WRITTEN CONSENT OF HON HAI PRECISION IND. CO., LTD.				APPD: Yihsin Chen	DWG No.:
				CHKD: Wolfe Liu	084-0000-7068
				DR: Xinqian Li	10/26'11
					SCALE
					SHEET
					REV.
				1:2	2/2
				A	

1

2

3

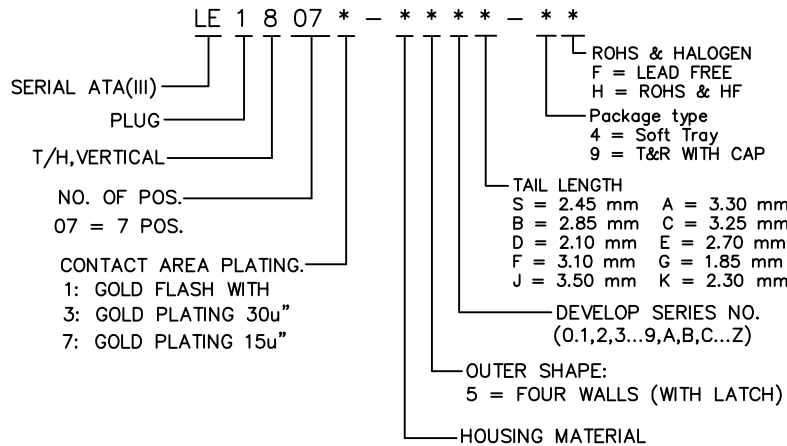
4

IDEAS GENERATED DRAWING. DON'T CHANGE BY HAND.

REV.	ECN. NO.	APPD.
A	BC100060390	Yihsin Chen

ITEM	DESC.	Q'TY	MATERIAL	TREATMENT	REMARK
	HOUSING	1	THERMOPLASTIC UL 94V-0		
2	CONTACT	SEE NOTE BELOW	COPPER ALLOY	A) NICKEL UNDER PLATING OVER ALL THICKNESS : 50 u" MIN. . B) MATTE TIN PLATING OVER NICKEL THICKNESS : 100 u" MIN. . ON SOLDER AREA. C) GOLD PLATING OVER NICKEL ON CONTACT AREA(SEE NOTES BELOW)	
3	BOARD LOCK	2	MEDIUM CARBON STEEL	A) NICKEL PLATING OVER ALL THICKNESS : 50 u" MIN. . B) MATTE TIN PLATING OVER NICKEL THICKNESS : 100 u" MIN. .	

NOTE : 1.HARMFUL MATERIAL CONTROL PLEASE FOLLOW FOXCONN'S DOC. "EPI12".
2.PLEASE CONTACT FOXCONN SALES REPRESENTATIVE TO VERIFY PRODUCT DETAILS & AVAILABILITY.
3.PRODUCT NO. MATRIX:



- | | | |
|-------------------------|------------------------|-------------------------|
| A=PA66,COLOR BLACK | R=PA6T,COLOR RED | 8=PA66,COLOR LIGHT GRAY |
| C=PA66,COLOR YELLOW | S=PA66,COLOR ORANGE | 9=LCP,COLOR WHITE |
| D=PA9T,COLOR IVORY | T=PA9T,COLOR BLACK | |
| E=PA46,COLOR BLUE | U=PA9T,COLOR BLUE | |
| G=PA66,LIGHT BLUE | W=PA66,COLOR WHITE | |
| H=PA46,COLOR YELLOW | Y=PA66,COLOR BEIGE | |
| K=PA46,COLOR WHITE | Z=PA66,COLOR DARK BLUE | |
| L=LCP,COLOR BLACK | 3=PA66,COLOR GRAY | |
| M=PA66,COLOR CHARCOAL | 4=PA66,COLOR DARK BLUE | |
| N=PA66,COLOR LIGHT BLUE | 5=PA66,COLOR RED | |
| Q=PA66,COLOR ORANGE | 7=PA66,COLOR ORANGE | |

4. THE CONCENTRATIONS OF BR&CL CAN SATISY THE REQUIREMENTS OF HALOGEN FREE IN DOCUMENT "EPI12".

X.±	X.±	UNITS mm	NAME(INTENDED USE) 7 POS. SATA PLUG	FOXCONN® FOXCONN INTERCONNECT TECHNOLOGY LIMITED.
.X±	.X±	MAT'L	PART NO.(INTENDED USE) LE1807*-****-**	
.XX±	.XX±	FINISH	APPD: Shih-Wei Hsiao	CLASS: <input type="checkbox"/> CONFIDENTIAL <input type="checkbox"/> SECRET <input checked="" type="checkbox"/> GENERAL
.XXX±	.XXX±		Q'TY	CHKD: Yusan Hsiao
THESE DRAWINGS AND SPECIFICATIONS ARE THE PROPERTY OF FOXCONN INTERCONNECT TECHNOLOGY LIMITED. AND SHALL NOTBE REPRODUCED, COPIED OR USED IN ANY MANNER WITHOUT THE PRIOR WRITTEN CONSENT OF FOXCONN INTERCONNECT TECHNOLOGY LIMITED.			DRAW: Peng Huang 7/30'14	DWG NO.: 303-0500-2659

1

2

3

4

IDEAS GENERATED DRAWING. DON'T CHANGE BY HAND.

REV.	ECN. NO.	APPD.
A	BC-10-0060375	Yihsin Chen
B	BC-14-0079091	Shih-Wei Hsiao

SPECIFICATIONS :

1. MATERIAL AND FINISH :

1-1. HOUSING :

THERMOPLASTIC , UL94V-0

1-2. CONTACT :

COPPER ALLOY, NICKEL UNDER PLATING OVER ALL, THICKNESS 50u" MIN. ,
MATTE TIN PLATING OVER NICKEL, THICKNESS 100u"MIN. ON SOLDER AREA,
GOLD PLATING OVER NICKEL ON CONTACT AREA,

1-3. BOARD LOCK :

MEDIUM CARBON STEEL, NICKEL UNDER PLATING OVER ALL, THICKNESS 50u" MIN. ,
MATTE TIN PLATING OVER ALL, THICKNESS 100u"MIN. .

1-4. HARMFUL MATERIAL CONTROL PLEASE FOLLOW DOC. EPI12.

2. PERFORMANCE :

2-1. CURRENT RATING : 1.5 Amps MAX. PER PIN.

2-2. OPERATING TEMPERATURE : -55°C TO +85°C.

3. ELECTRICAL :

3-1. LOW LEVEL CONTACT RESISTANCE(DRY CIRCUIT) : 30 MILLIOHMS MAX. INITIAL.

3-2. DIELECTRIC WITHSTANDING VOLTAGE : 500 VAC. AT SEA LEVEL.

3-3. INSULATION RESISTANCE : 1000 MEGAOHMS MIN. INITIAL.

4. MECHANICAL :

4-1. INSERTION FORCE: EIA-364-13, 45N MAX. .

4-2. REMOVAL FORCE: EIA-364-13, 10N MIN. .

4-3. DURABILITY: 50 CYCLES

5. ENVIRONMENTAL :

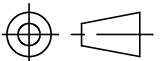
5-1. PHYSICAL SHOCK: PASS EIA-364-27, CONDITION H.

5-2. VIBRATION: PASS EIA-364-28, CONDITION V TEST LETTER A.

5-3. HUMIDITY: PASS EIA-364-31, METHOD II TEST CONDITION A.

6. PLEASE CONTACT FOXCONN SALES REPRESENTATIVE TO VERIFY
PRODUCT DETAILS & AVAILABILITY.

7. THE CONCENTRATIONS OF BR&CL CAN SATISY THE REQUIREMENTS
OF HALOGEN FREE IN DOCUMENT "EPI12".

X.±	X.* ±	UNITS mm	NAME(INTENDED USE) 7 POS. SATA PLUG	FOXCONN® FOXCONN INTERCONNECT TECHNOLOGY LIMITED.			
.X±	.X* ±	MAT'L	PART NO.(INTENDED USE) LE1807*	CLASS: <input type="checkbox"/> CONFIDENTIAL <input type="checkbox"/> SECRET <input checked="" type="checkbox"/> GENERAL			
.XX±	.XX* ±			TITLE: MATERIAL SHEET			
.XXX±	.XXX* ±	FINISH	APPD: Shih-Wei Hsiao	DWG NO.: 303-0300-2659			
THESE DRAWINGS AND SPECIFICATIONS ARE THE PROPERTY OF FOXCONN INTERCONNECT TECHNOLOGY LIMITED. AND SHALL NOTBE REPRODUCED, COPIED OR USED IN ANY MANNER WITHOUT THE PRIOR WRITTEN CONSENT OF FOXCONN INTERCONNECT TECHNOLOGY LIMITED.		Q'TY	CHKD: Yusan Hsiao		SCALE	SHEET	REV.
			DRAW: Peng Huang 12/24'14		N/A	1/1	B